



THE
CAIRNMILLAR
INSTITUTE

2019 ANNUAL RESEARCH REPORT



CAIRNMILLAR.EDU.AU
1800 391 393

391 - 393 TOORONGA ROAD
HAWTHORN EAST VIC 3123

TABLE OF CONTENTS

		09	2019 Publications
03	Executive Summary	10	Research Output Refereed Journals
04	Research Groups Introduction	15	Research Output International Conference Presentations
05	Research Groups Body Image & Gender Issues	16	Research Output National Conference Presentations Public Presentations
06	Research Groups Clinical Wellbeing and Resilience	17	Research Output Media Presentations
07	Research Groups (Internet) Gaming Disorder	18	Research Output Research Grants and Tenders Book Chapters
08	Research Groups Everyday Cognition Cairnmillar-Monash Health Clinical Psychology	19	Research Output Consultancies, Appointments, Honourary Positions Editor, Reviewer for Journals

EXECUTIVE SUMMARY

Our main aim in 2019 was to improve the research culture including increasing support of the research groups. While a work in progress, the improved culture resulted in a number of successful outcomes. Topics published were broad and representative of the research groups.

Of note:

- In 2019 Cairnmillar achieved one of its highest number of peer reviewed publications at 49.
- Most of these publications had impact factors between 0.25 and 5.68.
- Staff were supported in their attendance at 14 conferences with 9 being international.
- Levels of Cairnmillar grant income continues to be an area of development.
- Cairnmillar staff continue to develop an emerging presence in public and media presentations.

Overall, a successful and progressive year for research at Cairnmillar.

Professor Kathryn von Treuer
Executive Director

2019 RESEARCH GROUPS



"Our main aim in 2019 was to improve the research culture including increasing support of the research groups."

BODY IMAGE AND GENDER ISSUES

Group leader: Dr Jacquie Mills.

The primary objective of the Body Image & Gender Issues group is to enhance our understanding of people's experiences of body image, eating, and gender-related phenomena. We have a particular focus on applied outcomes of our research, whether that be working towards developing clear policies or guidelines, tools for clinical and research purposes, or prevention and intervention programs.



CLINICAL RESEARCH GROUP

Group leader: Assoc Prof Andrew Francis

The Clinical Research Group aims to conduct research which informs, evaluates and refines clinical practice across the lifespan. Member research interests span personality disorders, neurodevelopmental disorders, schizophrenia, mood disorders (depressive, bipolar and anxiety), trauma, stress and adjustment disorders, and many more. Honours, Masters and Doctoral research projects are available across all these areas. Our research is enriched through collaborations with government and private agencies, including the On Track Therapy Group, and others.

WELLBEING AND RESILIENCE

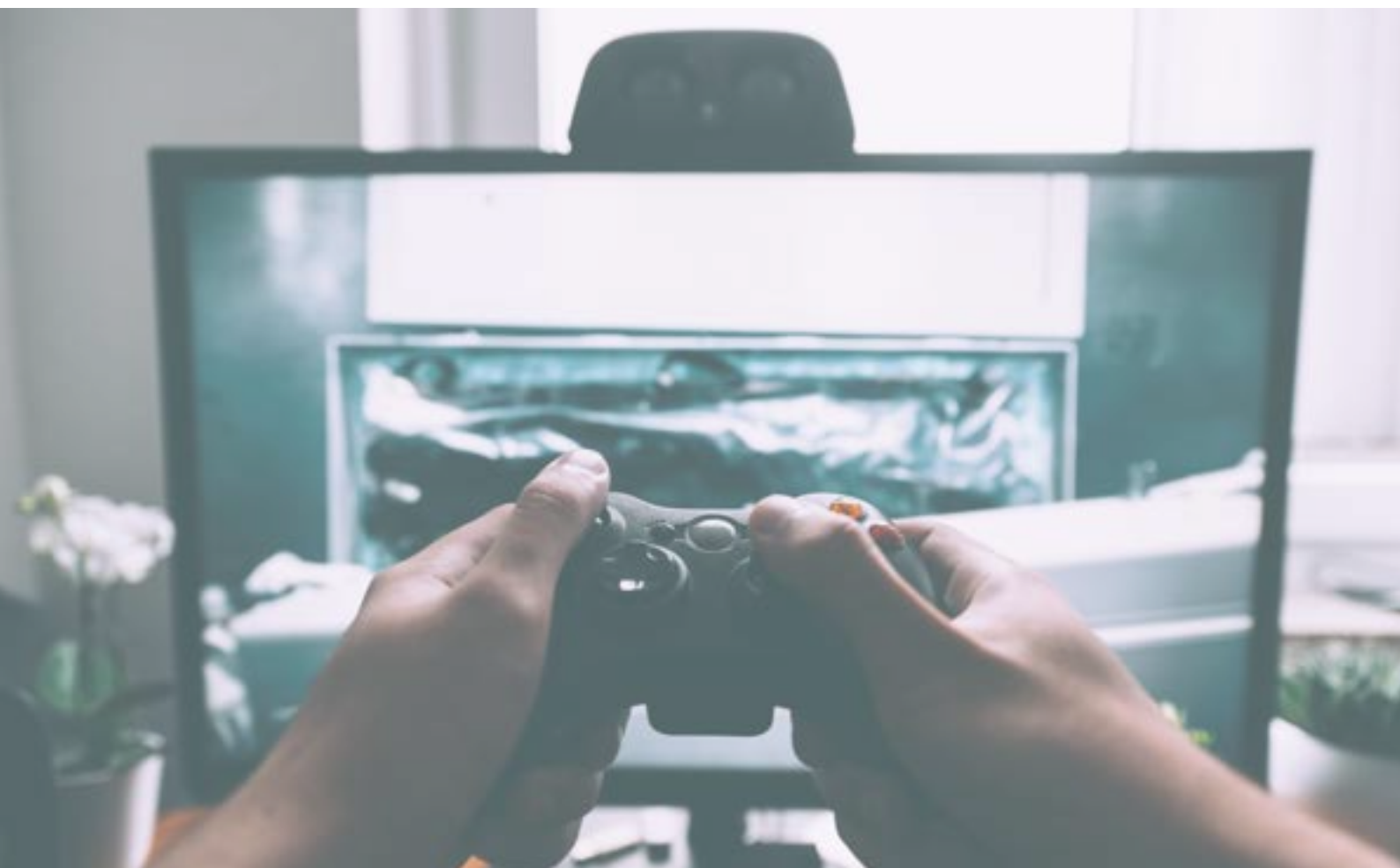
Group leader: Ms RoseAnne Misajon

The aim of this group is to understand wellbeing and resilience across a broad range of populations. This includes investigating factors that may negatively or positively impact on wellbeing, resilience and quality of life more broadly, as well as examining current theoretical models and measurement tools used in the field. The research interests and methodological approach within the group are very diverse. However, the overarching purpose is to better understand ways in which we can enhance resilience, particularly those facing a range of stressors and challenges, and to improve overall wellbeing and life quality across populations.

(INTERNET) GAMING DISORDER

Group leader: Dr Vasileios Stavropoulos

The Cairnmillar Gaming Research Group (CGRG) is dedicated to furthering the understanding of Internet Gaming Disorder (IGD) or also known as Gaming Disorder (GD) – a pattern of maladaptive gaming behaviours leading to significant impairment of various psychosocial (e.g., social and educational) domains. Our research aims to primarily inform effective IGD/ GD treatment, to contribute to the development of appropriate diagnostic instruments (e.g., through the application of advanced psychometric techniques, such as measurement invariance, latent class analyses and cross-cultural studies). A range of methods including cross-sectional and experimental designs, as well as longitudinal studies are employed.



EVERYDAY COGNITION

Group leader: Dr Steve Trawley

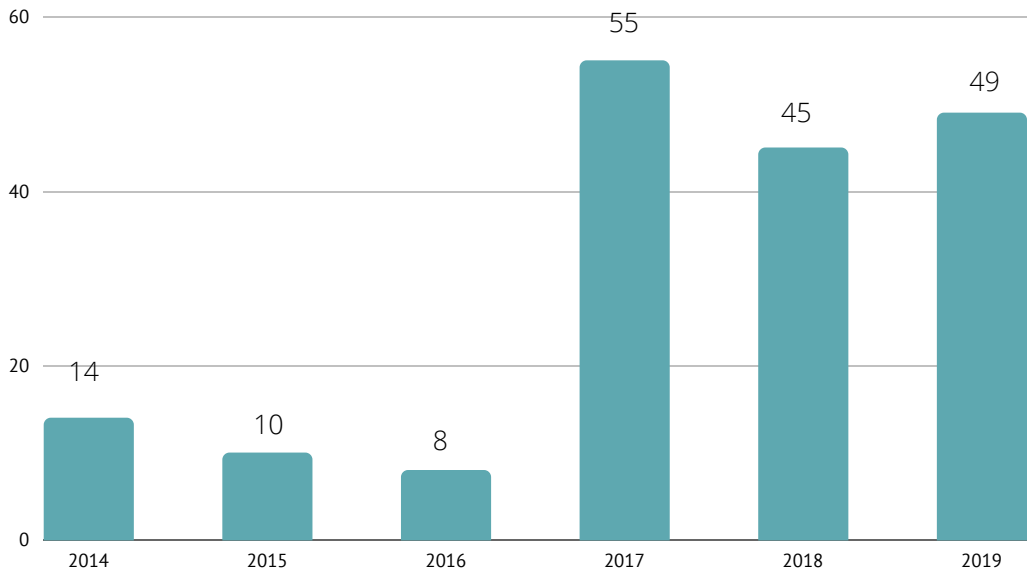
The aim of this research group is to better understand the cognitive processes that underpin everyday tasks, such as driving, shopping or remembering to take medication. We also have an interest in factors that influence these cognitive processes, ranging from poor sleep and circadian factors, to distraction and the impact of clinical conditions such as diabetes, dementia and other forms of neurological disruption on individuals and the communities in which they live. Honours, Masters and Doctoral research projects are available across all these areas.

CAIRMILLAR-MONASH HEALTH CLINICAL PSYCHOLOGY PRACTICE COLLABORATION

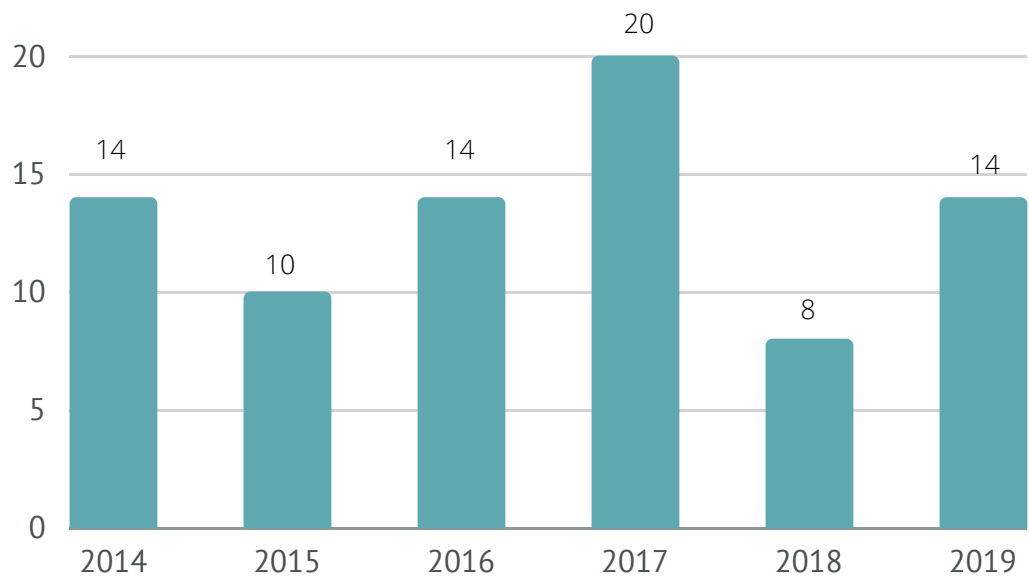
Group leader: Dr Jon Kettle.

The Cairnmillar – Monash Health Clinical Collaboration Research Group aims to conduct research that investigates theoretical and applied aspects of clinical psychology practice. This includes, but is not limited to, causes and treatment of mental disorders, such as psychosis, borderline personality disorder, eating disorders; chronic pain; effectiveness of psychotherapy; suicidality and functioning in public mental health clients. An overarching aim is to provide clinically relevant, applicable research findings in the area of mental health and service provision. Honours, Masters and Doctoral research projects are available in all these areas. The research is partnered with Monash Health, as well as other organisations as appropriate.

2019 PUBLICATIONS



**PEER
REVIEWED
PUBLICATIONS**



**CONFERENCE
PRESENTATIONS**

RESEARCH OUTPUT REPORT

REFEREED JOURNALS

Ahern, S., Cronin, J., Woods, N., Brady, N. M., O'regan, N. A., **Trawley, S.**, & Timmons, S. (2019). Dementia in older people admitted to hospital: An analysis of length of stay and associated costs. *International journal of geriatric psychiatry*, 34(1), 137-143.

Anderson, R., Warren, N., **Misajon, R.**, and Lee, S. (2019). Exploring wellbeing in youth with vision impairment: Insights for vision rehabilitation. *Applied Research in Quality of Life*. doi:10.1007/s11482-019-09724-1

Anderson, R., Warren, N., **Misajon, R.**, & Lee, S. (2019). You need the relaxed side, but you also need the adrenaline: Promoting physical health as perceived by youth with vision impairment. *Disability and Rehabilitation*. doi:10.1080/09638288.2018.1510552

Baptista, S., **Trawley, S.**, Pouwer, F., Oldenburg, B., Wadley, G., & Speight, J. (2019). What Do Adults with Type 2 Diabetes Want from the "Perfect" App? Results from the Second Diabetes MILES: Australia (MILES-2) Study. *Diabetes technology & therapeutics*.

Bennett, B., **von Treuer, K.M.**, McCabe, M., Beatie, E., Karantzas, G., Mellor, D., Sanders, K., Busija, L., Goodenough, B., & Byers, J. (2019). Resident perceptions of opportunity for communication and contribution to care planning in residential aged care. *International Journal of Older People Nursing*, in press.

Bouguettaya, A., Klas, A., Moulding, R., King, R., & **Knight, T.** (2019). Perfectionism as a social identity in Eating Disorders: A qualitative investigation of identity navigation. *Australian Psychologist*, DOI: 10.1111/ap.12379

Burleigh, T. L., Griffiths, M. D., Sumich, A., **Stavropoulos, V.**, & Kuss, D. J. (2019). A Systematic Review of the Co-occurrence of Gaming Disorder and Other Potentially Addictive Behaviors. *Current Addiction Reports*, 1-19.

Burn, M., **Knight, T.**, Taylor, L., & Toumbourou, J. W. (2019). Parents' Perceptions of Changes in Family Functioning After Participation in a Strengthening Families Intervention: A Qualitative Analysis. *Children and Youth Services Review*, 100, 428-436

Clark, T. (2019). The Psychotherapeutic Relationship in Massage Therapy. *International journal of therapeutic massage & bodywork*, 12(3), 22.

Collard, J. (2019). ACT vs CBT: A theoretical exercise in idiosyncratic language. *International Journal of Cognitive Therapy*. Vol 12(2), 126-15.

Collard, J. (2019). Conceptual Confusion in Psychological Therapy: Towards a Taxonomy of Therapies. *Journal of Rational-Emotive and Cognitive Behaviour Therapy*, DOI 10.1007/s10942-019-00313-7.

Dearly, B (2019). Restoring the wholeness of being: Working with trauma from the focusing-oriented experiential therapy perspective. *Psychotherapy and Counselling Journal of Australia*, 7 (2).

Evans, S., **Knights, T.**, Walker, A., Sutherland-Smith, W., & Reeves, S. (2019). Facilitators' teaching and social presence in online asynchronous interprofessional education discussion. *Journal of Interprofessional Care*. Online.

Evans, S., Ward, C., Shaw, N., Walker, A., **Knights, T.**, Sutherland-Smith, W. (2019). Interprofessional education and practice guide No. 10: Developing, supporting and sustaining a team of facilitators in online interprofessional education. *Journal of Interprofessional Care*. DOI: 10.1080/13561820.2019.1632817

Fletcher, R., **Knights, T.**, Macdonald, J. A., & StGeorge, J. (2019). Process evaluation of text-based support for fathers during the transition to fatherhood (SMS4dads): Mechanisms of impact. *BMC Psychology Open Access*

Fuller-Tyszkiewicz, M., **Richardson, B.**, Lewis, V., Linardon, J., **Mills, J.**, Juknaitis, K., ... Krug, I. (2019). A randomized trial exploring mindfulness and gratitude exercises as eHealth-based micro-interventions for improving body satisfaction. *Computers in Human Behavior*, 95, 58–65. doi:10.1016/j.chb.2019.01.028

Gibson, M. & **Francis, A.J.P.** (2019). Intergenerational transfer of Early Maladaptive Schemas in Mother-Daughter Dyads, and the Role of Parenting. *Cognitive Therapy and Research*. *Cognitive Therapy and Research*, 43(4), 737-747.

Gomez, R., & **Stavropoulos, V.** (2019). Oppositional Defiant Disorder Dimensions: Associations with Traits of the Multidimensional Personality Model among Adults. *Psychiatric Quarterly*, 1-16.

Gomez, R., **Stavropoulos, V.**, & Vance, A. (2019). Psychometric Properties of the Autism Spectrum Quotient: Children's Version (AQ-Child). *Journal of autism and developmental disorders*, 49(2), 468-480.

Gomez, R., **Stavropoulos, V.**, Vance, A., & Griffiths, M. D. (2019). Gifted Children with ADHD: How Are They Different from Non-gifted Children with ADHD?. *International Journal of Mental Health and Addiction*, 1-15.

Gomez, R., **Stavropoulos, V.**, Vance, A., & Griffiths, M. D. (2019). Re-evaluation of the latent structure of common childhood disorders: Is there a general psychopathology factor (p-factor)? *International Journal of Mental Health and Addiction*, 17(2), 258-278.

Gomez, R., Vance, A., Watson, S., & **Stavropoulos, V.** (2019). ROC Analyses of Relevant Conners 3–Short Forms, CBCL, and TRF Scales for Screening ADHD and ODD. *Assessment*, 1073191119876023.

Gomez R., Watson S. & **Stavropoulos V.** (2019). Personality Inventory for DSM–5, Brief Form: Factor Structure, Reliability, and Coefficient of Congruence. *Personality Disorders: Research, Theory & Treatment* (in press).

Hu, E., Stavropoulos, V., Anderson, A., **Clarke, M.**, Beard, C., Papapetrou, S., & Gomez, R. (2019). Assessing Online Flow Across Cultures: A Two-Fold Measurement Invariance Study. *Frontiers in Psychology*, 10.

Jelicic, L., Brooker, J., Shand, L., **Knight, T.**, Ricciardelli, L.A., Denham, G., & Burney, S. (2019). Experiences and health care preferences of women with ovarian cancer during the diagnosis phase. *Psycho-Oncology*. DOI: 10.1002/pon.4952

Kissane, D. W., Lethborg, C., Brooker, J., Hempton, C., Burney, S., Michael, N., Staples, M., **Osicka, T.**, Sulistio, M., Shapiro, J. and Hiscock, H. (2019) "Meaning and Purpose (MaP) therapy II: Feasibility and acceptability from a pilot study in advanced cancer," *Palliative and Supportive Care*. Cambridge University Press, 17(1), pp. 21–28. doi: 10.1017/S1478951518000883

McCabe, M.P., Beattie, E., Karantzas, G., Mellor, D., Sanders, K., Busija, L., Goodenough, B., Bennett, M., **von Treuer, K.**, Byers, J. (2019). Consumer Directed Care in Residential Aged Care: An Evaluation of a Staff Training Program. *Aging & Mental Health (CAMH)*, in press, online <https://doi.org/10.1080/13607863.2019.1574711>

Miles, G., Smyrniotis, K., Jackson, M. and **Francis, A.J.P.** (2019). Reward and Punishment Sensitivity Predict Narcissism Subtypes: Implications for the Etiology of Narcissistic Personalities. *Personality and Individual Differences*. 141, 143-151.

Mills, J., Mort, O., & Trawley, S. (2019). The impact of different responses to fat talk on body image and socioemotional outcomes. *Body Image*, 29, 149-155. doi: 10.1016/j.bodyim.2019.03.009.

Morcos, M., **Stavropoulos, V.**, Rennie, J. J., **Clark, M.**, & Pontes, H. M. (2019). Internet Gaming Disorder: Compensating as a Draenei in World of Warcraft. *International Journal of Mental Health and Addiction*, 1-17.

Navarro, C., **Knight, T.**, Sharman, S. J., & Powell, M. B. (2019). Challenges in translating interview protocols for alleged child victims of sexual abuse to different languages: A case study. *Child Abuse and Neglect*, 94, 104033 doi.org/10.1016/j.chiabu.2019.104033

Pontes, H. M., Schivinski, B., Brzozowska-Woś, M., & **Stavropoulos, V.** (2019). Laxer Clinical Criteria for Gaming Disorder May Hinder Future Efforts to Devise an Efficient Diagnostic Approach: A Tree-Based Model Study. *Journal of clinical medicine*, 8(10), 1730.

O'Donnell, R., **Richardson, B.**, Fuller-Tyszkiewicz, M., & Staiger, P. K. (2019). Delivering personalized protective behavioral drinking strategies via a smartphone intervention: a pilot study. *International journal of behavioral medicine*, 1-14.

Olsen, J.A. & **Misajon, R.** (2019). A conceptual framework for health-related quality of life dimensions. *Quality of Life Research*. doi:10.1007/s11136-019-02341-3

Rush, G., **Misajon, R.**, Hunter, J., Gardner, J., O'Brien, K. (2019). The relationship between endometriosis symptom frequency and pain, and subjective wellbeing. *Health and Quality of Life Outcomes*, 17, 123. doi:10.1186/s12955-019-1185-y

Shahzad, B. & **Collard, J.** (2019). The role of functional and dysfunctional negative emotions, resilience, and mindfulness in wellbeing. *Psychology & Behavioral Sciences International Journal*. Vol 13(2), DOI: 10.19080/PBSIJ.2019.12.555857

Smith, I., **Knight, T.**, Fletcher, R., Macdonald, J. A. (2019). When men choose to be childless: an interpretative phenomenological analysis. *Journal of Social and Personal Relationships*. DOI: 10.1177/0265407519864444

Stavropoulos, V., Adams, B. L., Beard, C. L., Dumble, E., **Trawley, S.**, Gomez, R., & Pontes, H. M. (2019). Associations between attention deficit hyperactivity and internet gaming disorder symptoms: Is there consistency across types of symptoms, gender and countries?. *Addictive behaviors reports*, 9, 100158.

Stavropoulos, V., Anderson, E. E., Beard, C., Latifi, M. Q., Kuss, D., & Griffiths, M. (2019). A preliminary cross-cultural study of Hikikomori and Internet Gaming Disorder: The moderating effects of game-playing time and living with parents. *Addictive Behaviors Reports*. Doi: 10.1016/j.abrep.2018.10.001

Stavropoulos, V., Bamford, L., Beard, C., Gomez, R., & Griffiths, M. D. (2019). Test-Retest Measurement Invariance of the Nine-Item Internet Gaming Disorder Scale in Two Countries: A Preliminary Longitudinal Study. *International Journal of Mental Health and Addiction*, 1-18.

Stavropoulos, V., **Cokorilo, S.**, **Kambouropoulos, A.**, **Collard, J.**, & Gomez, R. (2019). Cognitive Behavioral Therapy Online for Adult Depression: A 10 Year Systematic Literature Review. *Current Psychiatry Research and Reviews* 15(1).
<https://doi.org/10.2174/1573400515666190628125914>

Stavropoulos, V., Gomez, R., & MOTTI, F. (2019). Introduction to the Special Topic: "Internet Gaming Disorder: A Pathway Towards Assessment Consensus". *Frontiers in psychology*, 10, 1822.

Stavropoulos, V., Mastrotheodoros, S., Papapetrou, S., Gomez, R., Beard, C., & Motti-Stefanidi, F. (2017). Measurement invariance: The case of measuring romantic attachment in Greek and Cypriot adolescents. *European Journal of Developmental Psychology*, 1-10. DOI: 10.1080/17405629.2017.1414696

Stephens, A. N., Lennon, A., Bihler, C., & **Trawley, S.** (2019). The measure for angry drivers (MAD). *Transportation research part F: traffic psychology and behaviour*, 64, 472-484.

Stephens, A. N., O'Hern, S., **Trawley, S.**, Young, K. L., & Koppel, S. (2019). Self-reported aggression amongst active cyclists. *Accident Analysis & Prevention*, 128, 46-52.

Thomas, R., **Deighton, R.**, Mizuno, M., & Fujii, S. Y. A. C. (2019). Shame and self-conscious emotions in Japan and Australia: Evidence for a third shame logic. *Culture & Psychology*. doi:1354067X19851024

Thompson, C.L., Calafiore, D., Chochovski, J., **Trawley, S.**, & **von Treuer, K.M.** (2019). An Evaluation of a Community-Based Psychoeducation Program for Successful Ageing. *OBM Geriatrics*, in press.

Trawley, S., Baptista, S., Pouwer, F., & Speight, J. (2019). Prospective memory slips are associated with forgetting to take glucose-lowering therapies among adults with diabetes: results from the second Diabetes MILES–Australia (MILES-2) survey. *Diabetic Medicine*, 36(5), 569-577.

Webber, L. S., **Richardson, B.**, White, K. L., Fitzpatrick, P., McVilly, K., & Forster, S. (2019). Factors associated with the use of mechanical restraint in disability services. *Journal of Intellectual & Developmental Disability*, 44(1), 116-120.

CONFERENCE PRESENTATIONS

INTERNATIONAL CONFERENCE PRESENTATIONS

Aitken, K., **von Treuer, K.**, Kothe, E., & Anglim, J. (2019) A Systematic Review and Meta Analysis of Leadership, Organisational Identity and Organisational Identification during Change. 19th EAWOP Congress, Turin, Italy, 29 May- 1 June.

Aitken, K., **von Treuer, K.** The Key Leadership Elements of Successful Organisational Change: An Australian Perspective, 19th EAWOP Congress, Turin, Italy, 29 May- 1 June, 2019.

Collard, J. (2019). The application of the self-practice, self-reflection principles to shame attack and LFT exercises for CBT trainees. Presented at The 4th International Congress of Rational Emotive Behavior Therapy. Cluj, Romania.

Kabir, R. & **Misajon, R.** (2019). Migrant experiences of cultural microaggressions in the Australian workplace: A qualitative study. Presented at the International Quality of Life Studies Conference, Granada, Spain.

Kuss D. & **Stavropoulos V.** (2019). Symposium co-chairing on Gaming Disorder: International Perspectives. The 6th International Conference on Behavioral Addictions, the 17th-19th of June, 2019, Yokohama, Japan.

Mills, J., Fernando, R., Kordos, V., Shu, C., & **Misajon R.** (2019). "Defective and broken" - Women with endometriosis' relationship with their bodies. Presented at the Australasian Society of Behavioural Health and Medicine Conference Christchurch, New Zealand.

O'Kelly, M., **Collard, J.**, & Tarrant, B. (2019). Benefits participants get from real-plays. Presented at The 4th International Congress of Rational Emotive Behavior Therapy. Cluj, Romania.

von Treuer, K., McLeod, J., Fuller-Tyszkiewicz, M., & Scott, G. (2019). Determining the components of cohesion using the Repertory Grid Technique. 19th EAWOP Congress, Turin, Italy, 29 May- 1 June.

von Treuer, K., Reynolds, N., & Scott, G. (2019) A psychology competency model: Defining the practice competencies as meta-competencies in the context of psychological practice. 19th EAWOP Congress, Turin, Italy, 29 May- 1 June.

NATIONAL CONFERENCE PRESENTATIONS

Bennett, M., **von Treuer, K.M.**, McCabe, M., & Byers, J. (2019) Are staff and residents of aged care facilities ready and willing to communicate about care planning? 52nd Australian Association of Gerontology Conference, Sydney, Australia, 5-8th November.

Dearly, B. (2019). "Restoring the wholeness of being: Working with trauma from the focusing-oriented experiential therapy perspective" Presented at PACFA National Conference with theme Working with Trauma, Sydney.

Krupka, Z. (2019). Feeling heavy: The biopolitics of vicarious trauma. Presented at the Publics, Feelings, Politics Symposium. University of Notre Dame. Sydney, Australia.

Kuswara K., **Knight T.**, Campbell K., Bolton K., Zheng M., Hesketh K., Laws R. (2019). "It makes me feel motherly" – Breastfeeding and motherhood identity. Paper presented at the World Public Health Nutrition Congress, Brisbane, Australia.

McCabe, M., Byers, J., Mellor, D., Beatie, E., & **von Treuer, K.** (2019). Choice and Control and QOL among Residents in Aged Care. 52nd Australian Association of Gerontology Conference, Sydney, Australia, 5-8th November.

PUBLIC PRESENTATIONS

Collard, J. "Mental health in the workplace", Chub Insurance in service, Chub Insurance Melbourne, October 2019.

Collard, J. "Addiction and substance use", Men of Doveton Program, Doveton College, September 2019

Collard, J. "Mental Health", Men of Doveton program, Doveton College, August 2019.

Collard, J. "Addiction and substance use", Men of Doveton Program, Doveton College. May 2019

McCabe, M., Byers, J., Mellor, D., Beatie, E., & **von Treuer, K.** (2019). Choice and Control and QOL among Residents in Aged Care. 52nd Australian Association of Gerontology Conference, Sydney, Australia, 5-8th November.

Trawley, S. "Diabetes and Driving", Monash University Accident Research Center, November 2019.

Watt-McMahon, K. "Case report writing for the 5+1 internship", APS Melbourne Branch, September 2019.

Watt-McMahon, K. "Chronic suicidality & self-harm in borderline personality disorder", North West Primary Health Network, July 2019.

MEDIA PRESENTATIONS

Collard, J. (2019). Anger, the misunderstood emotion. Psych Central. <https://psychcentral.com/lib/anger-the-misunderstood-emotion/>

Kambouropoulos, K. (2019). What I would have done differently to help my mental health. ABC Life.

Krupka, Z. (2019) Childfree by choice. ABC Radio National, Life Matters. <https://www.abc.net.au/radionational/programs/lifematters/talkback-child-free-by-choice/11210602>

Krupka, Z. (2019). Footloose and childfree. Ladies We Need to Talk. <https://www.abc.net.au/radio/programs/ladies-we-need-to-talk/footloose-and-childfree/11216364>

Krupka, Z. (2019) How to sleep with your partner – literally. Triple J's The Hook Up. <https://www.abc.net.au/radio/programs/the-hook-up-podcast/sleeping-with-your-partner/11174744>



RESEARCH GRANTS AND TENDERS

Jan 2019. Addressing Exercise-Related Barriers to Artificial Pancreas Performance and Adoption. JDRF Strategic Research Agreement. **Trawley, S** (CIB). Unsuccessful.

May 2019. Addressing Exercise-Related Barriers to Artificial Pancreas Performance and Adoption. NHMRC. Clinical trials and cohort studies grants, 2019. **Trawley, S** (CIC). Unsuccessful

November 2019. PECS – [Perinatal Education Care Support] group model of multidisciplinary maternity care: a feasibility study Competitive internal grant – La Trobe University , the Austin Hospital, **The Cairnmillar Institute** CIE, \$35,000 Successful

BOOK CHAPTERS

Gomez, R., Watson, S. & **Stavropoulos V.** (2019). Peters Et Al.'S (2012) Social Interaction Anxiety Scale and The Social Phobia Scale Short Forms: Support For A Bifactor Model And Measurement Invariance Across Gender in Alexandra M. Columbus Advances in Psychology Research, Volume 139 in Nova Science Publishers. New York. USA.



CONSULTANCIES, APPOINTMENTS & HONOURARY POSITIONS

Coburn, J. Chair Working with Trauma conference planning committee, PACFA (22 – 24 February 2019, Sydney)

Mills, J. Board advisor to children's body image foundation, Pretty Foundation.

von Treuer, K. Committee Member, World Health Organisational- Collaborative Centre- Health Workforce Regulation

von Treuer, K. Honourary A/Professor, School of Medicine, Deakin University

von Treuer, K. Victorian Practitioner Member, National Psychology Board of Australia

EDITOR, REVIEWER FOR JOURNAL

Coburn, J.

- Psychotherapy and Counselling Journal of Australia (PACJA) (reviewer)

Mills, J.

- Body Image (reviewer)
- Eating Behaviors (reviewer)

Misajon, R.

- Quality of Life Research (reviewer)

Trawley, S.

- Diabetes Care (reviewer)

Knight, T.

- Journal of Psychosomatic Research

Stavropoulos, V.

- Plos One (Associate Editor)
- Frontiers in Psychology (Associate Editor)



THE
CAIRNMILLAR
INSTITUTE



CAIRNMILLAR.EDU.AU
1800 391 393

391 - 393 TOORONGA ROAD
HAWTHORN EAST VIC 3123